

STANDARD SPECIFICATIONS

JANUARY 2025

48



# CONTENT

48 OPEN SPECIFICATIONS

|    |   |
|----|---|
| 4  | <b>An innovative and rigorous design</b><br>to ensure a high quality product                      |
| 5  | <b>A construction by “the state of the art”</b><br>ensuring rigidity and durability               |
| 6  | <b>An effective and efficient rigging</b><br>and easy to use combined with an ergonomic deck plan |
| 9  | <b>Front and rear cockpits</b><br>friendly and functional   |
| 12 | <b>Indoor spaces</b><br>confortale and elegant  |
| 14 | <b>Two SmartRoom version</b><br>for each navigation program                                       |
| 15 | <b>Every details count</b><br>for a luxurious living experience                                   |
| 16 | <b>Material selection</b><br>carefully chosen   |
| 18 | <b>Systems</b><br>adequate and reliable (motorization, plumbing, electricity, lighting)           |
| 20 | <b>Optimized glazing</b><br>to ensure natural light and ventilation                               |
| 20 | <b>Delivery</b>   |
| 21 | <b>Technical characteristics</b>  |
| 23 | <b>Partner suppliers</b>  |



## AN INNOVATIVE AND RIGOROUS DESIGN

Developing a catamaran is first a team effort. Internally, Design Office and Product Marketing work hand in hand to collect customer expectations, prepare briefs and specifications, study all the necessary components (structure, networks, layout, fittings, ergonomics, style and decoration) and guarantee a high quality product.



To carry out this mission, Nautitech is surrounded by key partners: the renowned naval architecture firm, Marc Lombard Yacht Design Group, with whom the Nautitech shipyard has been collaborating for 15 years.

It is a beautiful adventure that pushes the standards of navigation ever higher.



### CHEDAL-ANGLAY

Added to this, is the keen eye of Christophe Chedal-Angray, interior designer, who signed the 44 OPEN and the 48 OPEN.

The Nautitech Open comes up with a unique identity, synonymous with a true art of living.

The latest Nautitech models benefit from all the expertise of these stakeholders and in particular the latest architectural developments of the MLYDG firm in terms of hydrodynamic performance. Analyses in the digital hull basin to seek the optimization of live works have been conducted to obtain both flat-tering performances under sail with a consistent volume of interior design.

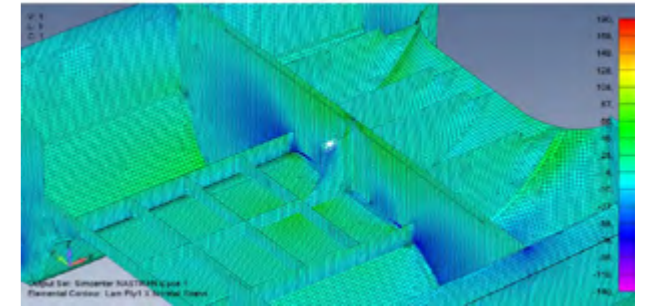


The design of the hulls has been studied to increase comfort by offering an even better sea behaviour, smoothest and sharp helm touch (signature of the Nautitech) with a good damping of the pitch, and easy tacking whatever the conditions are.



The Nautitech also benefit from the latest structural developments carried out by the firm MLYDG with the design office of the Nautitech shipyard to obtain a solid and rigid platform whatever the sea conditions. The use of structural counter moulds, more often used on very fast production rates, has disappeared.

Only stiffeners in composite and okoumé plywood marine define a healthy structural mesh or all their connections are accessible and visible. Many other elements have been studied rigorously, very important when living on board a multihull, such as at anchor: the ergonomics of the deck plan, the fluidity of movement in the cockpit and towards the foredeck to maneuver effectively and safely.



## A CONSTRUCTION "THE STATE OF THE ART" GUARANTEEING RIGIDITY AND DURABILITY

The hulls, decks and roofs of all our models are manufactured in our premises in fiberglass/ polyester resin sandwich via the vacuum infusion process. The sandwich is made with a Divinycell® foam core that has been previously cut with the digital control. This construction is particularly suitable to optimize the weight of high-performance composite structures. Closed-cell foams of composite panels combine stiffness and a higher strength/weight ratio. They also provide good impact resistance as well as acoustic and thermal insulation of spaces.

Marine okoumé plywood inserts are integrated into these foam panels at network crossings, but also at the most structurally stressed places. This is to maintain the complete integrity of the panel, its resistance to stress, but also its tightness.

The drape of all our pieces ends with a peel ply fabric that is removed after infusion. It allows uniform fiber plating, better grip of future structural bonds, as well as an irreproachable surface appearance.

The first layers of fiberglass in the hull are fully impregnated upon contact with vinylester resin. This ensures optimal composite sealing and resistance to hydrolysis, providing the best possible protection against osmosis. A high-quality ISO-NPG white gelcoat (RAL 9003) ensures a perfect finish without discoloration while preventing the surface from reaching too high temperatures upon touch.

The hull, like all our other parts, is infused at once, which avoids any subsequent connections to the contact.

The unidirectional fibre soles of the mast bulkhead and rear beam bulkhead are made of carbon. They provide greater rigidity than glass, and weight gain. Most of the structural bulkheads are installed before the hull is demoulded. Since the hull mould is the geometrical reference of the latter, the installation of bulkheads at this time of construction allows to obtain the best positioning precision. This sequence also allows to perfectly fix in place the hull after demolding, during the end of polymerization.

All the hull stiffness, longitudinal and transversal, is provided by bulkheads, plates, squares or omegas, manufactured beforehand in composite or CP okoumé thickness 15 and 18mm. These elements are mainly bound by glued and laminated angles to the hull panels. No «structural» counter moulding, characteristic of mass production volumes, is implemented. This typicality induces a healthy structure, simple, everywhere accessible, and optimized in weight.



Localisation of the carbone fiber sole

After the installation of the networks and modules, the hull/deck junction is then ensured by a structural bonding on the entire deck lines, but also the bulkhead. The latter are also, for many of them, bound by stratification angles to the deck to ensure the greatest rigidity and durability.

Concerning the hull appendages, the keels, also made of infusion glass/ polyester are reported at the end of production, glued to the hull.

The rudders, on stainless steel hanging bits, are positioned at the back of the hull to ensure the best maneuverability.

Finally, an antifouling platinum warm water, 3 layers, is applied on all our ships (others as option).

Operators, technicians and quality team work together to ensure that Nautitech manufacturing standards are met.

## AN EFFICIENT AND EASY TO USE RIGGING COMBINED WITH AN ERGONOMIC DECK PLAN

Mast and boom are made of anodized aluminum, 2 stages of boom bars for the mast, and supplied by sparcraft.

Standing rigging : Forestay  $\varnothing$ 14 mm, Intermediate shrouds  $\varnothing$ 14 mm, Lower  $\varnothing$ 10 mm

The rail and its mainsail HARKEN ball bearing traveller is located on the rear beam which allows to have a direct view on its sheet down on the aft beam and this whether you are at the helm, in the cockpit or in the saloon.

Two HARKEN PERFORMA 60.2ST manual winches and two 50.2ST 2-speed manual winches (electric upgrade optional) are distributed in the cockpit and on the rear beam to access the entire maneuvers. Two winch handles are provided with their case in the cockpit.



The solent is put on a PROFURL furler. Its HARKEN self tacking rail is located on the roof in front of the mast. The self-tacking allows easy and safe maneuvers for short handling sailing.

The bowsprit is removable and made of fiberglass/polyester resin, black finish.

The standard rigging is made of Dyneema®, extremely tear-resistant, low stretch and highly resistant to abrasion, moisture, UV rays and chemicals.

The deck plan has been studied for short crew sailing with return of the maneuvers to the cockpit, with the exception of the mainsail foot. The ergonomics of the deck plan, the ease of movement in the cockpit and on the foredeck to maneuver efficiently and safely including rigging are the key to beautiful sailing with peace of mind.

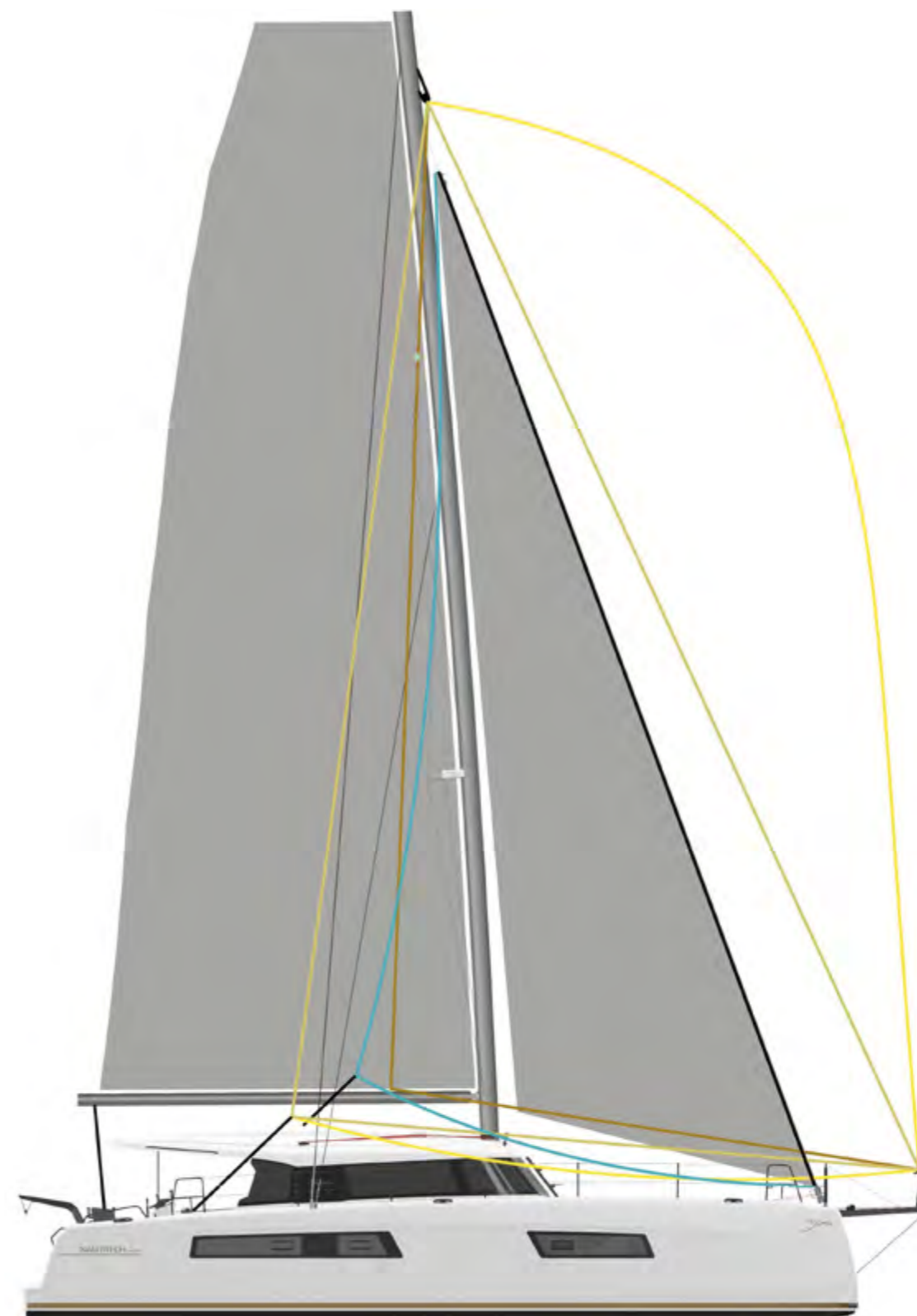
For standard sails:

- 93m<sup>2</sup> horn mainsail, full batten, in Dacron with 3 taken reefs, Incidence Sails
- 42m<sup>2</sup> Dacron Self Tacking Solent with UV Protection Strip, Incidence Sails

Grey lazy bag with central zipper removable and lazy-jack adjustable on each side of the boom.

A wide range of sails is available in the catalogue to satisfy the various sailing programs.

Do not hesitate to contact Nautitech team for advice.



## FRIENDLY AND FUNCTIONAL FRONT AND REAR COCKPITS

Access to the rear cockpit and to the water is via comfortable and secure skirts. The port skirt features a bath ladder and a hot/cold shower. Between the two skirts, are installed the black glass/carbon fiber davits.

Two aft helm stations on starboard and port sides, main to starboard, provides clear vision and control of the boat in all conditions. Directly connected to the rear cockpit, it is the ideal place to communicate with the crew without being isolated. It is also the perfect place for dock maneuvers.



On each side, a stainless steel helm seat with its comfortable upholstery and a navigation station with wheel tiller GOIOT TRIAK D700 aluminum black anodizing style «carbon», black silicone sheathing hosting the standard navigation equipment.



On starboard :

- Engine throttle
- 9" chart plotter Raymarine
- Multi-Function Display Raymarine
- Autopilot control console Raymarine



On port :

- 9" chart plotter Raymarine
- Multi-Function Display Raymarine
- Autopilot control console Raymarine
- Compass

The rear cockpit is protected by a rigid roof top and side glazing. It offers clear and peripheral vision over the entire crew, sail control and optimal maneuvering.



10 mooring cleats of which:

- 6 Antal black anodized aluminium roller cleats
- 2 fixed black anodized aluminum cleats
- 2 fixed anodized aluminum cleats for hanging integrated on the front cross beam

The fore deck is equipped with a front cockpit where there are two large storage lockers, the anchor davit and a locker dedicated to the 1700W Quick windlass with its remote control. The anchorage path is integrated into the longitudinal beam and protected with a partially opening composite cover. The anchor SPADE 35kg is located in front of this beam and comes with 70m of galvanized steel chain ø12mm. Two front balconies with natural wood seat allow to appreciate the view. The anodized aluminum front beam accommodates the martingale and the composite bowsprit. The trampolines are divided into two polyester nets, 30x30 mesh and white color, with elegant transfilation made under the hull. This space can be an optional lounge upholstery with two recessed lights in the deck.



Within this spacious space are:

- 3 seating areas (port, starboard and aft beam) with dedicated upholstery
- A large composite table for 8 people (1.75x0.8m)
- A cockpit refrigerator Vitrifrigo 90L
- Storage lockers on starboard and in the aft beam
- Gas box in starboard seat 2 x 6kg (bottle not included)
- Locker dedicated to the liferaft on port side
- HPL grating with natural wood veneer



Wide walkways lined with black powder-coated stanchions with black Dyneema® textile lifeline, and black powder-coated handrails, black powder-coated balconies provide secure access to the front cockpit.



## INDOOR SPACES COMFORTABLE AND ELEGANT

Saloon and cockpit are designed as a single living space offering distinct and complementary functions where stand the large dining table, is directly connected to the large galley which occupies the entire starboard space of the saloon with:

- Multiple closet, drawers and storage
- Storage space for glasses and wine bottles
- Large kitchen worktops in solid surface resin with shiny aluminum fiddles, two sinks integrated in the same material and their mixer tap with removable shower.
- 3-burner gas hobs, white glass finish
- Separate gas oven
- Double drawer stainless steel refrigerator, 144L to starboard
- Top loading cooling box
- Bin

The central bar, ideally located at the center of gravity of the boat, will make the link between the starboard kitchen area and the lounge area card table located on port side. This iconic element of the new Nautitech generation creates a multifunctional space and the ideal place to have a 360° view of the boat's environment.

On the port side, the desk/chart table facing the way is provided with plenty of storage and a comfortable ottoman-type seat. It includes standard navigation equipment such as 12' chart plotter, VHF, radio autopilot control as well as the Apollo ra-770 Fusion Marine Entertainment System and various instruments related to the selected equipment.

The living room adjoins this space and offers a large L-shaped sofa with its cosy upholstery and a nice fixed table. Two suspended large cupboard storage located on either side of the saloon add even more storage.



Symmetrical cabins access forward of the salon, is made comfortable by handgrad and large stairs. Each cabin is equipped with a double bed (rear cabins 160\*200cm/ front cabins 160\*196cm at widest). The grey color mattresses have a thickness of 11cm. Each double cabin will also benefit from a fleece headboard and a footboard dressed in a suede type fabric. The aft cabins will also have two shifts on each side of the bed.

Two reading lights with a black silicone cover and a built-in USB socket are fixed to the headboard for softer lighting. Blackout blinds for the different windows are also provided for more privacy.

In terms of storage each cabin has a storage drawer under bed, a wardrobe and a niche



The owner suite located on the port side is decorated with a large dressing area with two beautiful lighted wardrobes including a full height, many drawers and storage space, a modular space in desk. This suite has a toilet area with electric fresh water toilet and its hand wash as well as a large bathroom area in front. A large shower with transparent plexiglass door, shower and hand shower, a resin worktop with two integrated basins and mixers, high furniture with mirror and a worktop with storage.



## TWO VERSIONS OF SMARTROOM FOR EACH NAVIGATION PROGRAM



SMARTROOM FLEXIBILITY



SMARTROOM UTILITY



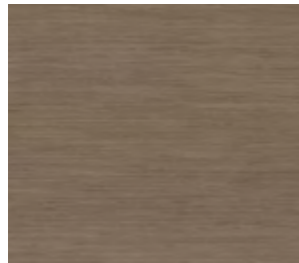
## HIGH-END DETAILS FOR A LUXURIOUS LIVING EXPERIENCE

- Refined upholstery with organic shapes
- Stainless steel descent handrail with leather effect covering
- Leather effect dressing of the chart table with finishing seam saddler
- Leather effect cover of the mast pillar with decoration manta ray Nautitech
- Leather dressing of the flat edges, from the top of the owner suite chest of drawers
- Lighting of the wardrobes of the owner's dressing room
- Headboard covered and fleece
- Bred frame with fabric finishing



# MATERIAL SELECTION

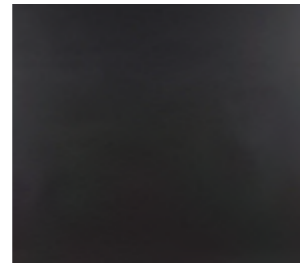
## GALLEY & SALOON - LIGHT WALNUT FINISH



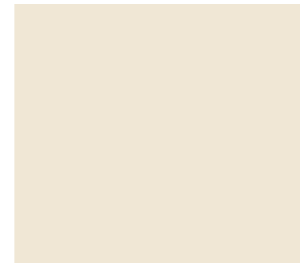
**Interior wood**  
Light Walnut



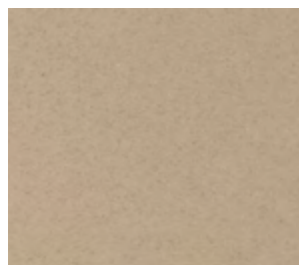
**Floor**  
Essential Oak



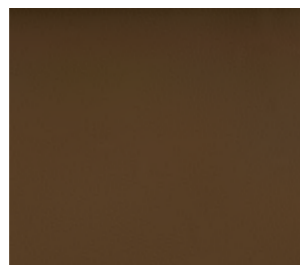
**Baseboard, storage and details**  
Black matt



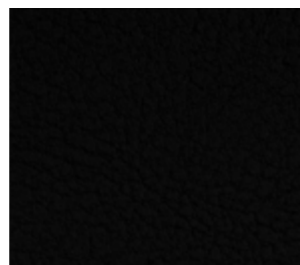
**Galley countertop**  
Solid surface  
Kerrock® Bisque



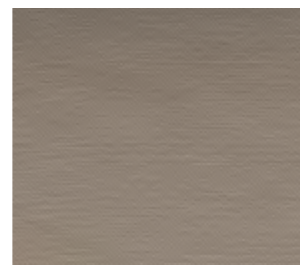
**Bar Top**  
Solid surface  
Kerrock® Granit Rhyolite



**Fabric finishing (Front top)**  
Spradling Valencia  
Sumatra



**Fabric finishing (Mast pillar, chart table)**  
Spradling Valencia Black

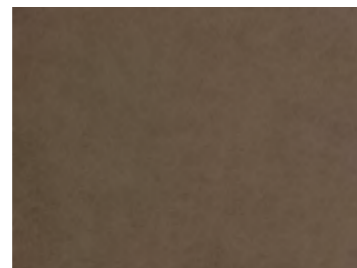


**Horizontal ceiling liner**  
Silververtex Macadamia

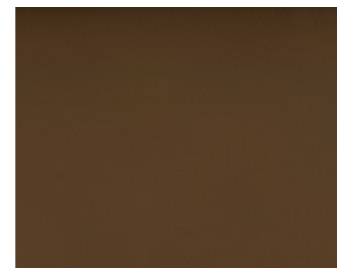
## HULLS



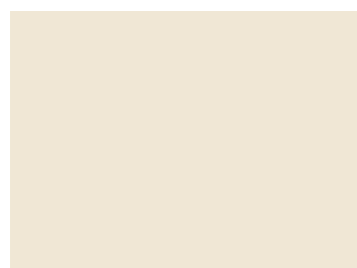
**Bed head**  
Vyva Botanic Sand



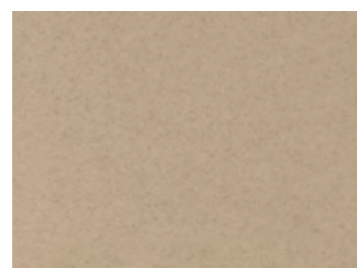
**Bed frame**  
Vyva Mocha Camel



**Furniture top**  
Valencia Sumatra

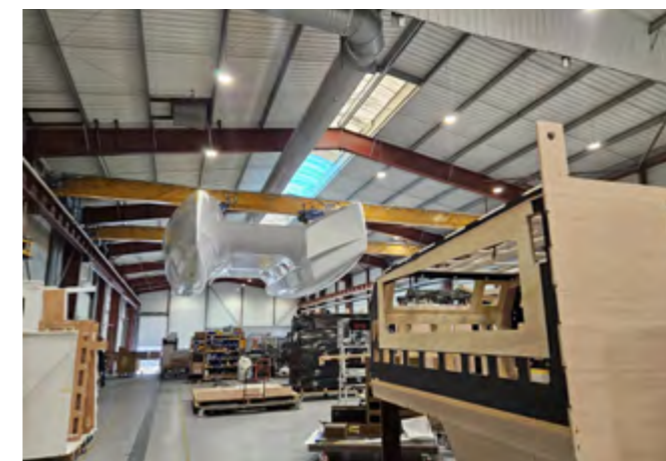


**Bathroom countertop and sink**  
Solid surface  
Kerrock® Bisque



**Bathroom shower support**  
Solid surface  
Kerrock® Granit Rhyolite

The furnitures are assembled in module which allows to guarantee a regularity of the assemblies and a high quality of finishing. These modules are then equipped with part of the networks before being lowered into the floats and then connected. They are fixed in the boat by gluing to sika to limit vibrations and noise nuisance.



The panels used for the cabins are composed of a spruce/okoumé sandwich core and a Alpi® decorative multilaminar wood veneer. Thick plated edges are used to ensure a high quality finish. Massive chestnut woods are judiciously used on board in places of strong passage for a longer time life and a softer feeling under hand when grabbing.

The flooring is made of plywood with a laminate panel finish designed to resist impact and scratches, easy to clean and disinfect.

## ENGINE

- 2 engines 60cv Volvo Penta Sail drive (option 75cv) avec alternateurs 115Ah
- 2 folding aluminum tripal propellers
- 2 diesel 300 L tanks with fuel gauge on chart table screen
- 2 fiberglass/foam sandwich with stainless steel shaft
- Emergency tiller
- Engine compartment insulate with double density sound proofing foam
- Anti-immersion bulkhead upstream of the engine, passage of cables and ducts filled by addition of seals in accordance with the standard

## PLUMBING

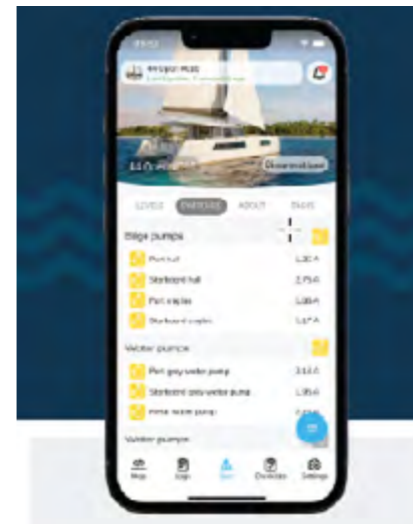
- Black Water: 2 x 63L Aluminum Tank, Gauge with Chart Table Display. Composite Grommet.
- Grey water: recovery under the floor (bottom of the hull)
- Fresh water: 2 x 300L tank with 2 level probes, gauge with display at the chart table. Valve accessible in the starboard forward locker with hose protection sheath. Brass grommet.
- Pressurized water system with 5L expansion tank located on starboard under floorboard at mast bulkhead
- 60L water heater with resistance of 1200W in 110V and 500W in 230V located in the port engine compartment. Electric and manual bilge pump in each hull.
- Electric and manual bilge pump in each engine compartment
- Electric fresh water toilet

## ELECTRICITY

- 220V panel board on starboard hull corridor closet
- 12V panel board are located portside under the bed in the aft cabin, and starboard on the engine bulkhead
- 2 x 12 V/ 95 Ah AGM engine batteries (starboard/port) + Cristec 16A charger
- 6 service batteries AGM (total 6 x 140Ah)
- Victron Multiplus: 3KW converter - 120A charger - 230V or 110V
- Dock socket 32A/ 230V (or 50A -110V)
- Galvanic insulator plate in the starboard engine room
- 230V AC + USB socket in each cabin + USB port in the cabins integrated into the reading light
- 230V AC + USB socket in the saloon

SAILSENSE on-board monitoring system offering optimal and simplified energy management on board and consisting of 4 large blocks:

1. **Two power distribution and digital switching boxes (Powerail)** that allow to secure and control the main power circuits of your boat. These enclosures also include many inputs to measure the condition of the boat's main systems (gauges, batteries, etc.).
2. **A smart box, the HUB**, which acts as the real brain of your boat. It is he who will pilot and coordinate the Powerail according to predefined scenarios. The HUB also serves as an interface between your boat's main systems and the outside world.
3. **A control screen:** present on the navigation screen, the Sailsense application allows you to monitor and control the various on-board systems.
4. **A physical button keyboard (Blink keyboard)**, which enables the most frequently used electrical consumers to be activated (navigation lights, etc.)



- A subscription is also offered in partnership with SailSense to go further in the experience and:
- Track your boat remotely 24/7 anywhere in the world\*
- Receive real-time alerts in case of problems
- Keep your boat safe and ready to sail anytime
- Control your boat remotely (remote switching)
- Keep important documents of your boat at hand

## LIGHTNING

- LED navigation lights fixed on front balconies
- LED anchor light
- LED stern light integrated in the roof top
- LED lighting in the cockpit: ceiling lights and led strips
- LED lighting in the saloon: ceiling lights, chart table readers lights and led strips
- LED lighting in cabins: ceiling spots and reading lights

## OPTIMIZED GLAZING TO GUARANTEE BRIGHTNESS AND NATURAL VENTILATION

### ON THE FRAME

The glazing are in PMMA smoked grey RAL 9005 ép.15mm, guaranteeing a better durability to abrasion, a better restitution of lights and exterior colors, while guaranteeing thermal insulation.

- Aluminum patio door with two sliding leaves, lockable. Black frame. Maximum opening 1884mm.
- Panoramic roof glazing with 2 large integrated opening panels (490x340mm) and flush on each side of the pillar
- 2 panels opening T60 FLUSH LEWMAR 2G with mosquito nets and blackout blinds forward of the roof



### ON THE DECK

- FLUSH LEWMAR 2G deck panels with mosquito and blackout blinds
  - o Rear cabin T10 (1 per side - 2 total)
  - o Front Cabin T44 (1 per side - 2 total)
  - o Bathroom/WC : T10 (2 per side - 4 total)
  - o Forward Point/Sail Hold : T60 (1 per side - 2 total)
- 1 large glazing at the headboard in the aft cabin (1011x417mm) with integrated flush opening porthole (490x160mm)

### ON THE HULL

- Large hull glazing with 3 integrated flush openings (390x160mm)



## DELIVERY

The boat is launched in Rochefort, close to the yard and is sailed to La Rochelle marina, offering the first undersail/motoring trial. A week of marina berth is offered. A docking kit including 8 fenders with embroidered socks and 4 moorings is provided. SPADE ancor 35kg galvanized steel, with its chain Ø 12mm, lenght 70m with bridle is also installed.

## TECHNICAL CHARACTERISTICS

|  |                                  |
|--|----------------------------------|
| <b>Architect and Exterior Design</b>                 | Marc Lombard Yacht Design Group  |
| <b>Interior Design</b>                               | Christophe Chedal-Anglay Design  |
| <b>Length overall (LOA)</b>                          | 14,67 m / 48'1" ft               |
| <b>Length waterline (LWL)</b>                        | 14,32 m / 47' ft                 |
| <b>Beam overall</b>                                  | 7,97 m / 26'2" ft                |
| <b>Draft</b>   | 1,55 m / 5'1" ft                 |
| <b>Air draft without antenna</b>                     | 23 m / 75'45 ft                  |
| <b>Displacement Light (mLC)</b>                      | 13,5 t / 29,768 lbs              |
| <b>Upwind sail surface - std (mainsail + solent)</b> | 135,5m <sup>2</sup> / 1458 sq ft |
| <b>Mainsail</b>                                      | 93m <sup>2</sup> / 1001 sq ft    |
| <b>Self-tacking solent</b>                           | 42,5m <sup>2</sup> / 455 sq ft   |
| <b>Genoa (option)</b>                                | 64m <sup>2</sup> / 688 sq ft     |
| <b>Code 0 (option)</b>                               | 89 m <sup>2</sup> / 958 sq ft    |
| <b>Gennaker (option)</b>                             | 125 m <sup>2</sup> / 1345 sq ft  |
| <b>Spinnaker (option)</b>                            | 186 m <sup>2</sup> / 2001 sq ft  |
| <b>Engine</b>  | 2 x D2-60 Volvo, sail drive      |
| <b>Fuel tank</b>                                     | 600 L / 158g / 79 US gal         |
| <b>Fresh water tank</b>                              | 600 L / 158g / 79 US gal         |
| <b>Black water capacity</b>                          | 2 x 63 L / 17 US gal             |



NOS FOURNISSEURS PARTENAIRES





## NAUTITECH 48 OPEN STANDARD INVENTORY

---

### TECHNICAL DATAS

---

|   |                                    |
|---|------------------------------------|
| Length overall                            | 14,67 m / 47'9                     |
| Beam                                      | 7,97 m / 26'2                      |
| Draft                                     | 1,55 m / 5'1                       |
| Displacement light (mlc)                  | 13,5 t / 29 768 lbs                |
| Engine type                               | Diesel, Saildrive                  |
| Engine power                              | 2 x 60hp Volvo Penta               |
| Fuel capacity                             | 2 x 300L / 2 x 79 gal              |
| Fresh water capacity                      | 2 x 300L / 2 x 79 gal              |
| Cabins and heads                          | 2 to 4                             |
| Berths                                    | 4 to 9                             |
| Mainsail area                             | 93m <sup>2</sup> / 915 sq ft)      |
| Self tacking solent area                  | 42,5m <sup>2</sup> / 455 sq ft)    |
| Height of mast above water line (approx.) | 22,95 m / 75'4                     |
| Architect and Exterior Design             | Marc Lombard Yacht Design<br>Group |
| Interior Design                           | Chedal Anglay Design               |

Certification CE category A (10 Pers.)

Certification CE category B (10 Pers.)

Certification CE category C (22 Pers.)

Certification CE category D (22 Pers.)

---

### CONSTRUCTION

---

|  |   |
|--|---|
| Hull and Deck made of fibreglass and polyester sandwich infusion                 | ■ |
| Hull, Deck and Roof in gelcoat white   | ■ |
| Roof counter mold made in one part, infused, white gelcoat                       | ■ |
| Sliding door bulkhead made by injection : aft side in white, front side in black | ■ |
| Carbon lining in the hulls at the transverse beams (mast and stern)              | ■ |
| Keel in GRP laminated and bonded to hull   | ■ |
| Gold sticker floating lines as per standard hull decoration                      | ■ |

---

### WINDOWS

---

|   |   |
|---|---|
| Double sliding door to salon, black frame, with lock                                    | ■ |
| Windscreen with 2 large integrated opening flush panels on each side of the mast pillar | ■ |
| 2 opening hatches T60 flush at the front of the roof                                    | ■ |
| 2 opening hatches T60 flush for forepeak  | ■ |
| 2 opening hatches T44 flush for forward cabins  | ■ |
| 6 opening hatches T10 flush for the aft cabins and bathrooms                            | ■ |
| All the deck hatches are with mosquito and blackout blinds included                     |   |
| 2 large windows at the bed head of the aft cabin with integrated opening flush hatch    | ■ |
| Large hull glazing windows with 3 integrated flush openings per hull                    | ■ |

---

### RIG AND DECK HARDWARE

---

|   |   |
|---|---|
| Aluminium anodised mast - 2 spreaders sets  | ■ |
| Aluminium anodised boom   | ■ |
| Anodized aluminium forward front beam   |   |
| Running rigging Dyneema®  | ■ |
| Solent furler PROFURL   | ■ |
| Harken Mainsheet traveller on the aft beam  | ■ |
| Harken Self tacking solent track on the roof  | ■ |
| Composite foldable Bowsprit with removable furler FX 4500 with furling line, tack line and dyneema gennaker halyard | ■ |

4 manual winches in the aft cockpit, HARKEN PERFORMA, 2 x 50.2ST, 2 x 60.2 self-tailing radial aluminium, 2 speeds  
2 winches handles and pockets



## SAILS

---

Full top square batten mainsail 93 sqm (3 manual reef lines), Dacron, Incidence sails  
Black Lazy bag  
Self-tacking Solent in Dacron 42 sqm, incl. white UV protection stripe Incidence sail



## FORWARD COCKPIT / DECK

---

Black laquered stanchions with textile lifelines  
2 x black laquered forward pulpits with seats in natural wood  
6 x Antal black mooring cleats, 2 positions  
2 x alloy cleats at the cross beam  
2 polyester white bow nets, 30x30 lashed to hull and front beam  
Anchor locker and 2 large forward lockers  
Dedicated locker for the windlass 1 700W with remote control



## AFT COCKPIT / TRANSOM

---

Open and spacious cockpit, protected by the roof and side windows  
3 seating areas (port, starboard and aft beam)  
Storage lockers on starboard and in the aft beam  
Gas box in starboard seat 2 x 6kg (bottle not included)  
Liferaft locker on port side  
90L 12V cockpit fridge  
Composite cockpit table with 2 fixed foot (1,75x0,8m)  
HPL grating with natural wood veneer  
Black laquered Aft pushpits  
2 black handrails on the aft deck  
Folding swim ladder on portside  
Hot/Cold cockpit shower on portside transom  
Black glass/ carbon fiber davits for tender  
Flush integrated GRP box in bulkward, with black glass holder



## HELM STATION

---

2 steering stations, main on starboard  
Mechanical engine throttle on starboard side  
Steering column with white powder coated finish  
Black aluminium wheel GOIOT TRIAK D700 with black silicone coating  
2 stainless steel helm seats + Eden upholstery



## ELECTRONIC AND MULTIMEDIA

---

Raymarine Navigation pack  
1 x chartplotter Raymarine AXIOM 9" at each steering station + 1 x chartplotter Raymarine AXIOM 12" at chart table + 1 x multifunction I70S display at each steering station + Autopilot P70S + VHF Ray 90 at chart table + AIS receiver / transmitter  
Fusion Apollo RA -770 with 4 speakers



## ROOF

---

Black anodised aluminium handrail on both sides of the roof  
Sheet passage with protective cover on the roof



## PROPULSION / STEERING

---

2 engines 60 HP Volvo Penta (Saildrive)  
2 diesel 300L tanks with fuel gauge on chart table screen  
Alternators 115Ah (1 x per engine)  
2 x 3-blade fixed aluminium propellers  
2 GRP rudders with stainless steel stock  
Emergency tiller  
2 engine compartments with GRP hatches  
Engine compartment insulate with double density sound proofing foam  
Anti-immersion bulkhead upstream of the engine, cable and sheath passage refilled by adding gaskets according to the standard



## **ELECTRICIY**

---

220 V electrical panel in starboard hanglocker ■  
12V power panel on port below bed in aft cabin, starbord on engine bulkhead ■  
6 x service battery 12 V / 140 Ah AGM ■  
2 x engine batteries 12 V / 95 Ah AGM + Cristec Charger 16A ■  
Monitoring system SAILSENSE ■  
Electrical switch for batteries (service and engines) ■  
1 x 230V plug + 1 x 12V USB-A plug per cabin ■  
1 x 230V plug + 1 x USB-A plug in saloon ■  
Multiplus Victron : inverter 3 KW- 80Amp charger - 230 V or 110V ■  
Shore power plug 32 A / 230 V (or 50 Amp - 110V) ■  
Galvanic isolator on starboard ■

## **FEUX**

---

LED navigation lights mounted on the bow pulpits ■  
LED anchor light ■  
Stern light recessed in the shape of the roof ■  
LED lighting in cabins (spotlights and reading lights), saloon (spotlights, led strips and reading light) and cockpit (spotlights and led strips) ■

## **PLOMBERIE**

---

2 holding tanks 63L with gauge at the chart table (one by hull), brass seacock ■  
Grey water: recovery under the floor (bottom of the hull)  
Fresh water: 2 x 300L tank with 2 level probes, gauge with display at the chart table.  
Valve accessible in the starboard forward locker with hose protection sheath. Brass seacock, ■  
Hot water 60L boiler with 1200W in 110V and 500W in 230V ■  
Freshwatersystem with electrical pressure pump and 5 l expansion tank ■  
Electric and manual bilge pumps in both hulls ■  
Electric bilge pumps in both engine compartments ■

## **INTERIOR LAYOUTS**

### **Generalities**

---

#### **3 cabins / 2 bathrooms**

Interior woodwork in Alpi light walnut ■  
Essential oak finishing flooring ■  
Salon : ■  
Fabric-covered saloon ceiling with black leatherette centre line ■  
Fabric-covered vertical roof frame ■  
Furnitures baseboard and shadow gap matt black ■  
Galley worktop in Kerrock ■  
Central bar worktop in Kerrock ■  
Lining of instrument holder at chart table, black leatherette ■  
Lining of forward top, black leatherette ■  
Lining of side top, brown leatherette ■  
Cabins : ■  
Fabric-covered headboard ■  
Fabric-covered bed frame ■  
Top of the chest of drawers with leatherette in the owner's cabin ■

### **Salon**

---

Comfortable saloon with L-shaped with fixed dining table ■  
Eden upholstery 3 colors choices ■  
Storage drawer under the sofa ■  
Chart table sea facing on port side with seat ■  
Mast pillar with black leatherette finishing ■  
Black alloy handrail in companionway with leatherette finishing ■

### **Galley**

---

Multiple cupboards and storage space ■  
Large worktops in solid surface resin with shiny aluminum fiddles ■  
Central Bar ■  
Dedicated storage cabinet for glass and wine bottle ■  
Two sinks integrated in the same material and their mixer tap with removable shower. ■  
Stainless steel fridge with 2 drawers, 144L ■

|   |   |
|---|---|
| Integrated top opening icebox in galley | ■ |
| 3 burner gas hob, white glass finish    | ■ |
| Separate gas oven                       | ■ |
| Waste bin                               | ■ |

### **Cabins**

|   |   |
|---|---|
| Aft cabins with double beds (160*200cm)           | ■ |
| Forward cabins with double beds (160*196cm)       | ■ |
| Mattress, colour Light Grey                       | ■ |
| Fabric-covered headboard and bed frame            | ■ |
| Storage under bed                                 | ■ |
| Cupboards   | ■ |
| Shelves   | ■ |
| 12V USB LED reading lights                        | ■ |
| Blinds and mosquitos screens on each deck hatches | ■ |
| Blinds for hull windows                           | ■ |

### **Owner's cabin (in addition to description above)**

|  |   |
|--|---|
| Access from the saloon by sliding door                                 | ■ |
| Dressing area: wardrobe, shelf, chest of drawers with removable tablet | ■ |
| Large storage area with 3 doors inboard side                           | ■ |

### **Owner's bathroom (depending on the configuration chosen)**

|  |   |
|--|---|
| Shower space with transparent plexiglass door, shower tray and hand shower | ■ |
| Resin worktop with two integrated basins and mixer taps                    | ■ |
| Mirrors with integrated storage  | ■ |
| Outboard storage space   | ■ |
| Towel rail   | ■ |
| 1 separate toilet, electric fresh water and sink                           | ■ |

### **Head with integrated toilet (depending on the configuration chosen)**

|   |   |
|---|---|
| Washbasin with mixer tap                  | ■ |
| Resin worktop                             | ■ |
| Storage space                             | ■ |
| Towel rail                                | ■ |
| Mirrors                                   | ■ |
| 1 integrated toilet, electric fresh water | ■ |

### **Head with separated toilet (depending on the configuration chosen)**

|  |   |
|--|---|
| Washbasin with mixer tap                         | ■ |
| Resin worktop                                    | ■ |
| Storage space                                    | ■ |
| Towel rail                                       | ■ |
| Mirrors  | ■ |
| 1 separate toilet, electric fresh water and sink | ■ |

### **Companionway**

|         |   |
|---------|---|
| Storage | ■ |
|---------|---|

### **Safety equipment end delivery**

|   |   |
|---|---|
| Antifouling Platinum (3 coats)  | ■ |
| Delivery in La Rochelle incl. transport, launching, rigging (1 week Marina fees incl.)            | ■ |
| Mooring kit : 8 fenders with black Nautitech embroidered socks + 4 mooring lines                  | ■ |
| Anchoring kit : Delta anchor 35 kg galvanised steel, with 70 meter of 12mm galvanised steel chain | ■ |

Version S2\_2025 - AUGUST 8TH 2025

Date of issue : 08/08/2025 - all previous price lists lose their validity

The brochure is intended for advertisement only and is not part of a contract, warranty or of an offer. We reserve the right to modify or improve our products and to change its specifications without notice. We are not liable for errors and printing mistakes.

NAUTITECH CATAMARANS, 5-7 rue Hubert Pennevert, 17300 Rochefort - France

Tel : +33 (0)5 46 99 54 51

Email : contact@nautitech.fr

[www.nautitechcatamarans.com](http://www.nautitechcatamarans.com)